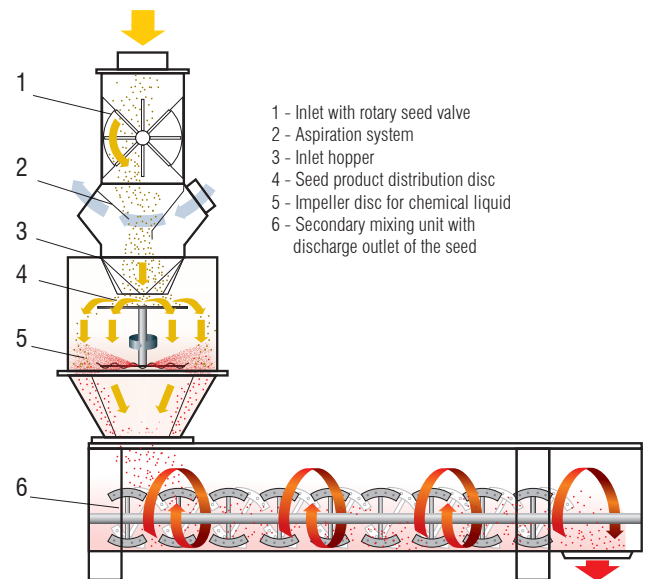




## Flow diagram



The **PETKUS Chemical Seed Treater C 010** is used for continuous, wet chemical treating of seed such as grain, corn, pulses etc.

### Advantages:

- Continuous, reliable operation
- Simple operation and handling
- Precise dosing of the liquid seed dressing agent and prevention of incorrect treatment due to the integrated automatic checking devices
- Homogeneous mixing due to fine spraying of the seed dressing agent by the spraying disc and effective mixing in the secondary mixing unit

### Description:

The seed is transported to the chemical seed treating chamber over the inlet. There, the product is distributed in an even product veil by a rotating distributing disc.

The seed dressing agent is dosed by a metering pump on a spraying disc and evenly sprayed on the seed, creating a fine mist, and then brought in contact with the product veil.

After applying the seed dressing agent, the product is transported to the secondary mixing unit where an even and uniform distribution on the seeds is ensured.

### Construction:

The chemical seed treater consists of the product inlet, the chemical seed treating chamber with the distributing and spraying disc, the dosing unit with a pump and the secondary mixing unit. The drive is operated with a gear motor.

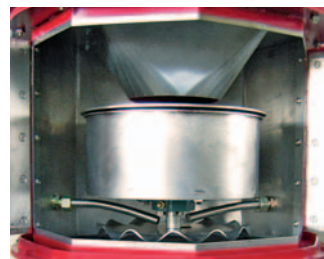
The chemical seed treater is controlled by a control cabinet with a touch panel.

### Standard Equipment:

- Bolted housing made of sheet steel
- Chemical seed treating chamber with inlet
- Dosing unit with a pump
- Control cabinet with touch panel and control software
- Secondary mixing unit with a connection for the aspiration
- Drive motors
- Sensors for monitoring and control

### Options:

- Additional pumps
- Model in stainless steel for all assembly groups in direct contact to the product
- Rotary seed lock
- Cross flow separator

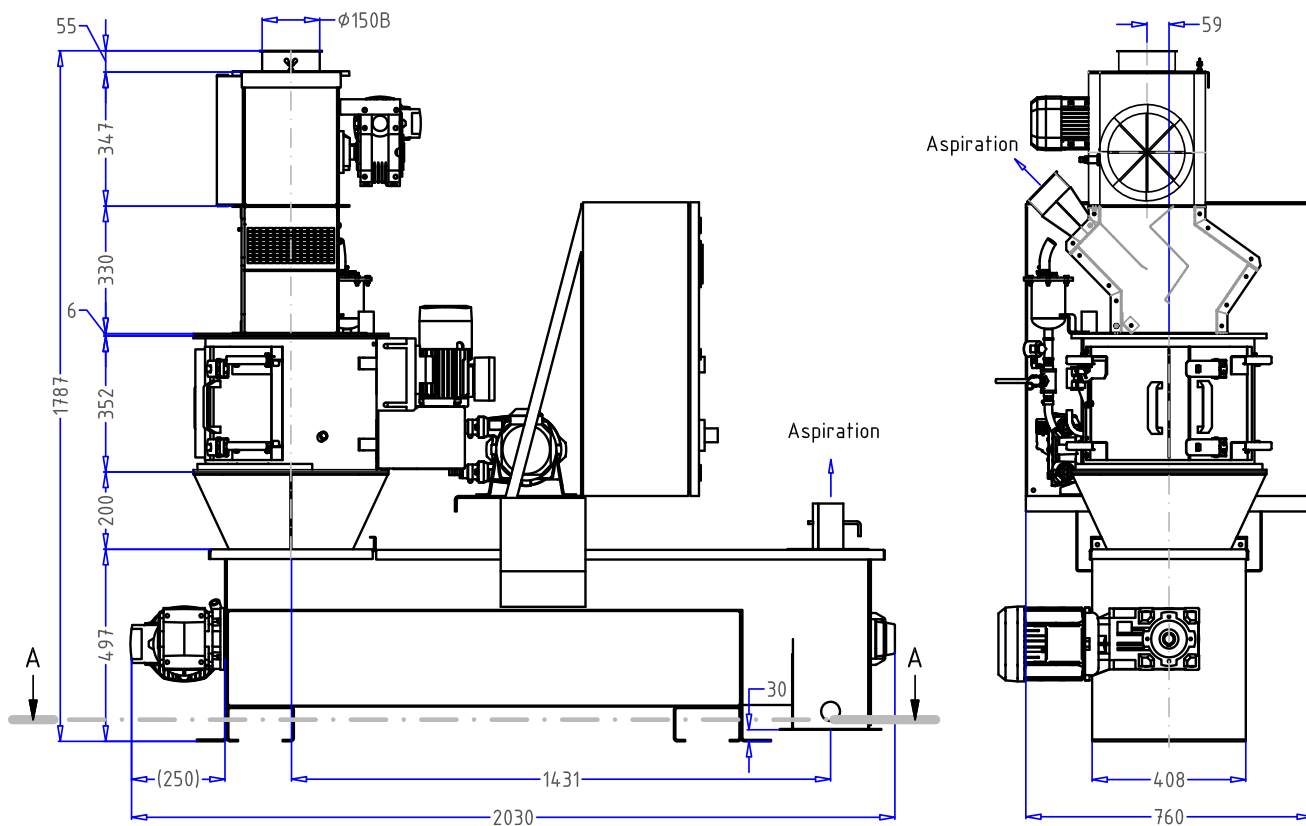


Interior of the treater

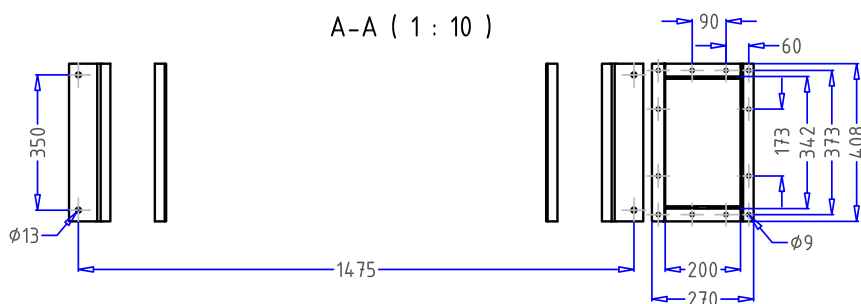


Secondary mixing unit

# Chemical Seed Treater Type C 010



A-A ( 1 : 10 )



Technical data		C010
Capacity (Based on Wheat)	t/h	2 to 10
Electrical drives		
Distribution disc	kW	0,75
Secondary mixing unit	kW	1,5
Pump	kW	0,18/0,25/0,55
Rotary seed valve	kW	0,37
Dosing of chemical liquid	ml/100kg	200 - 800

Technical Alteration reserved.